

Alaska Department of Fish and Game

Habitat Section
Southeast Region



105-32-10190 Tributary 1

ADDITION

Water body name:

Survey date: 8/25/2023

Quad: Petersburg D-6

Species & Lifestage:

Upper Reach Latitude: 56.859574 **Longitude:** -133.683123

Survey crew: FC, NJ

Lower Reach Latitude: 56.857924 **Longitude:** -133.683199

Findings: We surveyed this uncataloged stream using a backpack electrofisher and GPS and captured juvenile coho salmon and threespine stickleback (Figure 1). The stream is in tidally influenced wetland with beaver ponds upstream of the last survey point (Table 1; Figures 2, 3). Fish habitat continues upstream but we did not continue our survey due to time.

Recommendations: Add this stream to the anadromous waters catalog for rearing coho salmon (Figure 4).

Nomination: Pending

Table 1.—105-32-10190 tributary 1 survey data.

Waypoint	Latitude	Longitude	Notes	Stream Width ft	Stream Substrate	Habitat Features	Gradient %	Sample Effort	Sample Results
690	56.858507	-133.685160	Stagnant water with grassy banks, no rocks or woody structures seen. Tidally influenced. No signs of adults in stream. Not good for efishing.				0-1		
691	56.858362	-133.683509	Slow to stagnant water. Grassy and sandy banks. No other structures seen. Tidally influenced area. Looks like beaver pond upstream.		Small Gravel Sand		0-1	EF	2 CO
692	56.859578	-133.683143	Water forks up stream towards beaver pond. Water level is too low just upstream but enough at this location for shocking. potentially worth looking at again in future if higher water.				0-1		2 CO 1 SB



Figure 1.—Juvenile coho salmon and three spine stickleback captured at waypoint 692.



Figure 2.—Channel at waypoint 692.



Figure 3.—Channel at waypoint 691.

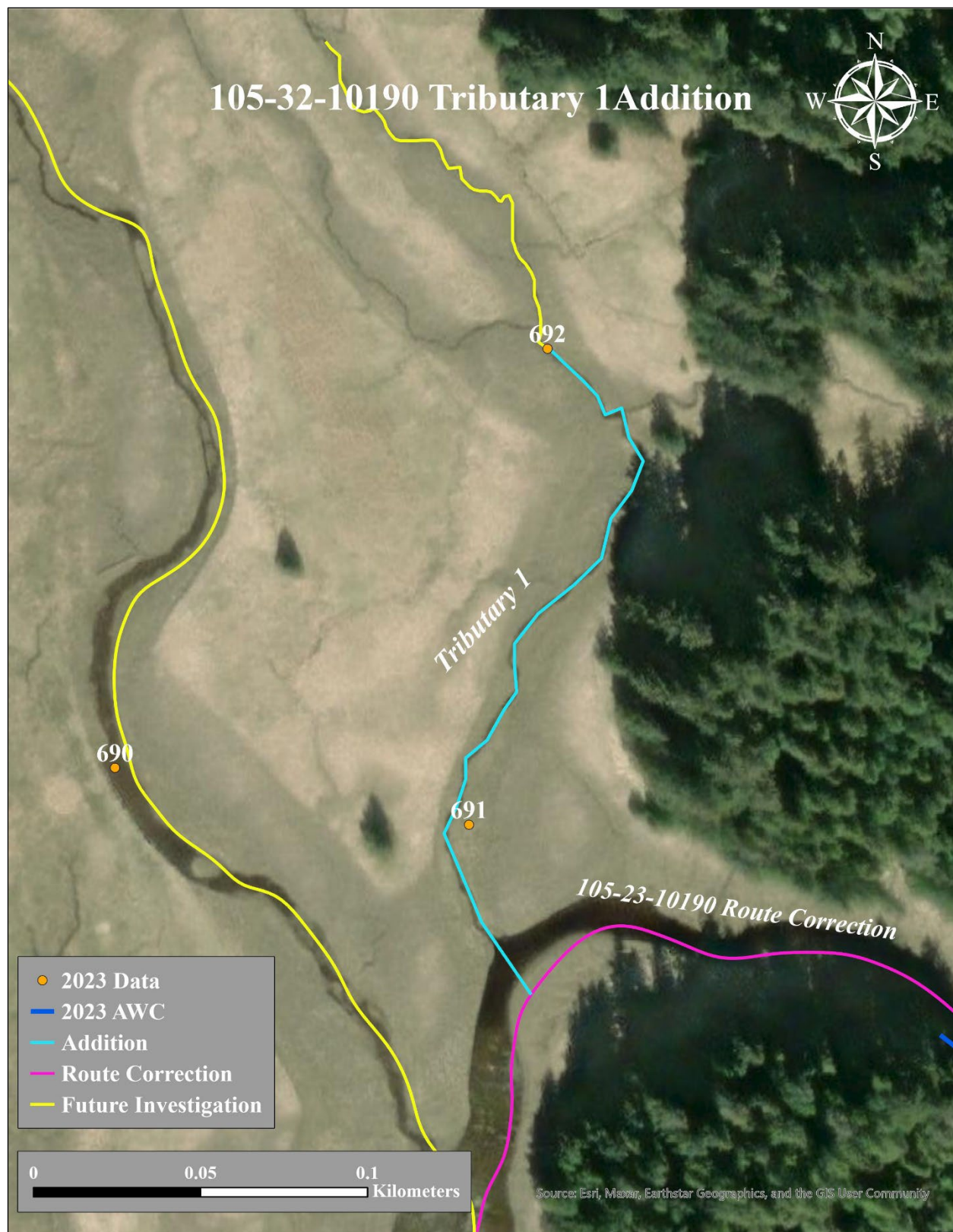


Figure 4.—105-32-10190 tributary 1 addition map.